

PART OF THE SE.1/4, SEC. 34, T.6N., R.1W., S.L.B. & M.

115

# EAST BENCH AT 29TH

IN OGDEN CITY

SCALE 1" = 60'

TAXING UNIT: 25

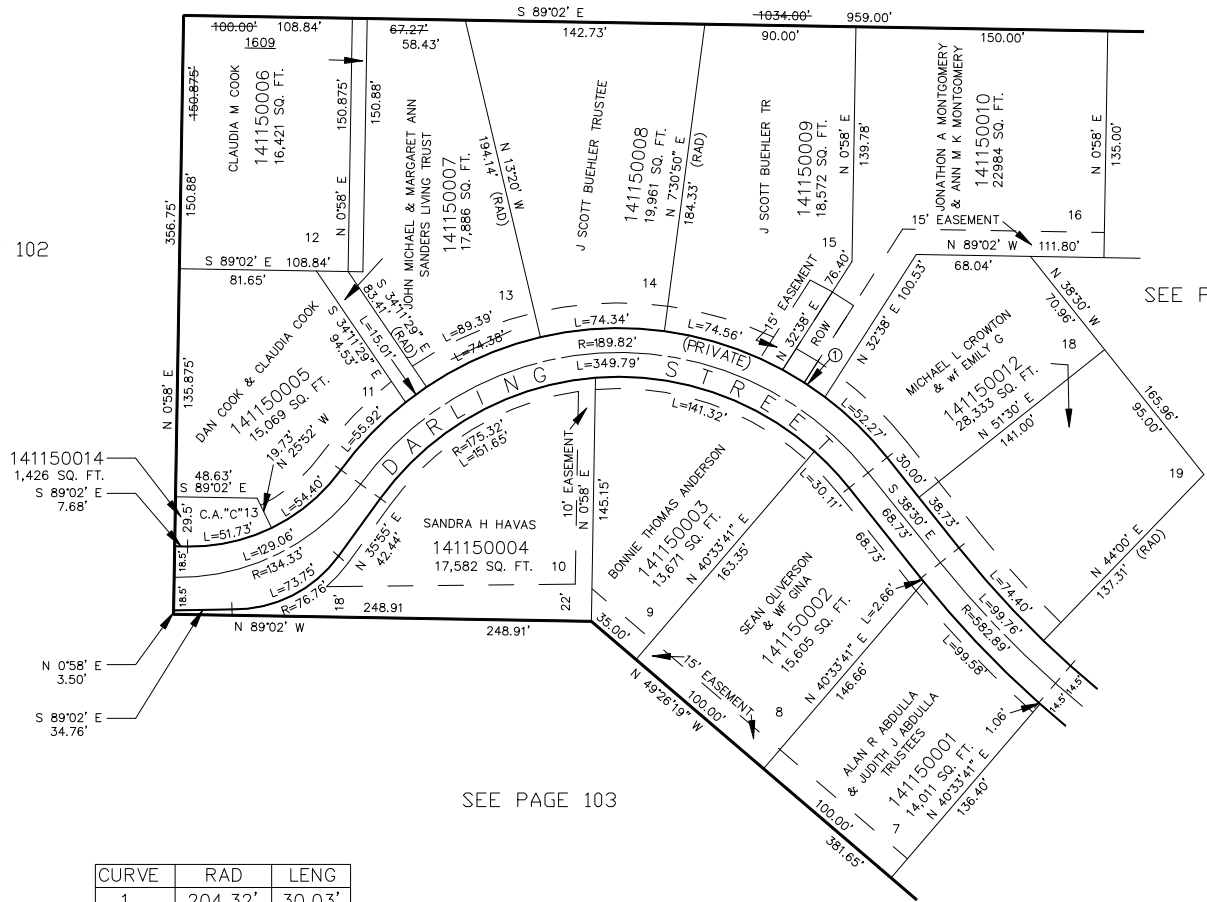
SEE PAGE 96

29TH

STREET

SEE PAGE 102

SEE PAGE 114



SEE PAGE 103

CURVE	RAD	LENG
1	204.32'	30.03'

7' UTILITY & DRAINAGE EASEMENTS EACH SIDE OF PROPERTY LINES AS INDICATED BY DASHED LINES EXCEPT AS OTHERWISE SHOWN.

AMD. LOTS 16,17,26 SEE DEDICATION PLAT IN BOOK 42, PAGE 27 OF RECORDS.

FOR COMPLETE ENG DATA SEE ORIGINAL DEDICATION PLAT IN BOOK 25, PAGE 35 OF RECORDS.

LOTS 1-4 AMENDED. SEE DEDICATION PLAT IN BOOK 29, PAGE 99 OF RECORDS.

LOT 16 AMENDED. SEE DEDICATION PLAT IN BOOK 38, PAGE 61 OF RECORDS.